

2006 CALENDAR

A close-up photograph of a welder working on a large metal pipe. The welder is wearing a dark, heavy protective suit and gloves. A bright, intense light from the welding process illuminates the scene, creating a dramatic contrast with the dark background. Sparks and smoke are visible around the point of contact between the welding torch and the pipe.

WELDING
NATIONAL WELDING CORP

Salt Lake City, Utah - 801-255-5959
national-welding.com

I-40 Bridge Seismic Retrofit - 34 Columns, 5,400 ft of weld, Memphis TN
W.L. Hailey & Company



NATIONAL WELDING CORP

Salt Lake City, Utah - 801-255-5959
national-welding.com

Point of The Mountain Water Treatment Plant 36" thru 120" pipe - Draper, UT
Clyde - Ellsworth JV



NATIONAL WELDING CORP

Salt Lake City, Utah - 801-255-5959
national-welding.com

Jersey City Aqueduct Relocation 72" x 7,700' & 2-180' Casings - Secaucus, NJ
Conti Enterprises Inc.



NATIONAL WELDING CORP

Salt Lake City, Utah - 801-255-5959
national-welding.com

Williamson County 48" x 5,000' Raw Water Main - Salado TX
McLean Construction, Inc.



NATIONAL WELDING CORP

Salt Lake City, Utah - 801-255-5959
national-welding.com

54" x 76,000' Raw Water Transmission Main - Green Bay WI

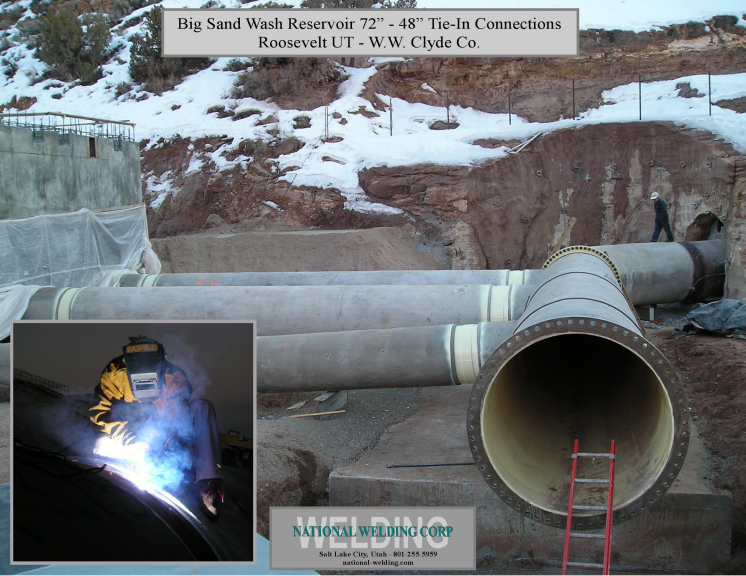
Garney Construction, Inc.



NATIONAL WELDING CORP

Salt Lake City, Utah - 801-255-5959
national-welding.com

Big Sand Wash Reservoir 72" - 48" Tie-In Connections
Roosevelt UT - W.W. Clyde Co.



NATIONAL WELDING CORP

Salt Lake City, Utah - 801.255.5959
national-welding.com

Point of The Mountain Aqueduct 48" thru 84" x 88,000' Salt Lake City, UT W.W. Clyde Company



A

Legend:
A - Point of the Mountain WTP
B - Little Cottonwood WTP



B

NATIONAL WELDING CORP
Salt Lake City, Utah - 801-255-5959
national_welding.com

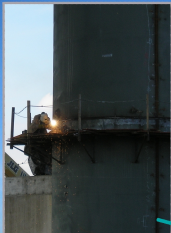
Lake Pleasant Pipeline 78" x 45,000' Phoenix AZ
PCL Civil Constructors

A welder wearing a yellow protective suit and a welding mask is working on a large pipe in a trench at night. The scene is illuminated by the bright light of the welding process. The trench walls are dark and textured. In the background, another person can be seen on a higher level of the trench. The overall atmosphere is industrial and focused.

NATIONAL WELDING CORP

Salt Lake City, Utah - 801-255-5959
national-welding.com

I-40 Bridge Seismic Retrofit - 34 Columns, 5,400 ft of weld, Memphis TN
W.L. Hailey & Company



NATIONAL WELDING CORP

Salt Lake City, Utah - 801.255.5959
national-welding.com

Lake Pleasant Pipeline 78" x 45,000' Phoenix AZ
PCL Civil Constructors



NATIONAL WELDING CORP

Salt Lake City, Utah - 801-255-5959
national-welding.com

Pilot Butte Pipeline - 96" x 4,600' - Redmond, OR
James W. Fowler Co.



MEN AT WORK

Workers have
started
digging
the
trench
to
lay
the
pipe.
The
excavator
is
used
to
dig
the
trench
and
to
lift
the
pipe
into
it.
The
workers
are
responsible
for
installing
the
pipe
and
for
making
sure
it
is
properly
aligned
and
supported.
The
excavator
is
also
used
to
dig
the
trench
and
to
lift
the
pipe
into
it.
The
workers
are
responsible
for
installing
the
pipe
and
for
making
sure
it
is
properly
aligned
and
supported.

NATIONAL WELDING CORP
Salt Lake City, Utah - 801-255-5959
national-welding.com

Albuquerque Water Treatment Plant - 20" thru 86" x 12,000' - Albuquerque NM
PCL / Triad JV



NATIONAL WELDING CORP

Salt Lake City, Utah - 801.255.5959
national-welding.com